

## ASABE Robotics Competition, 2010



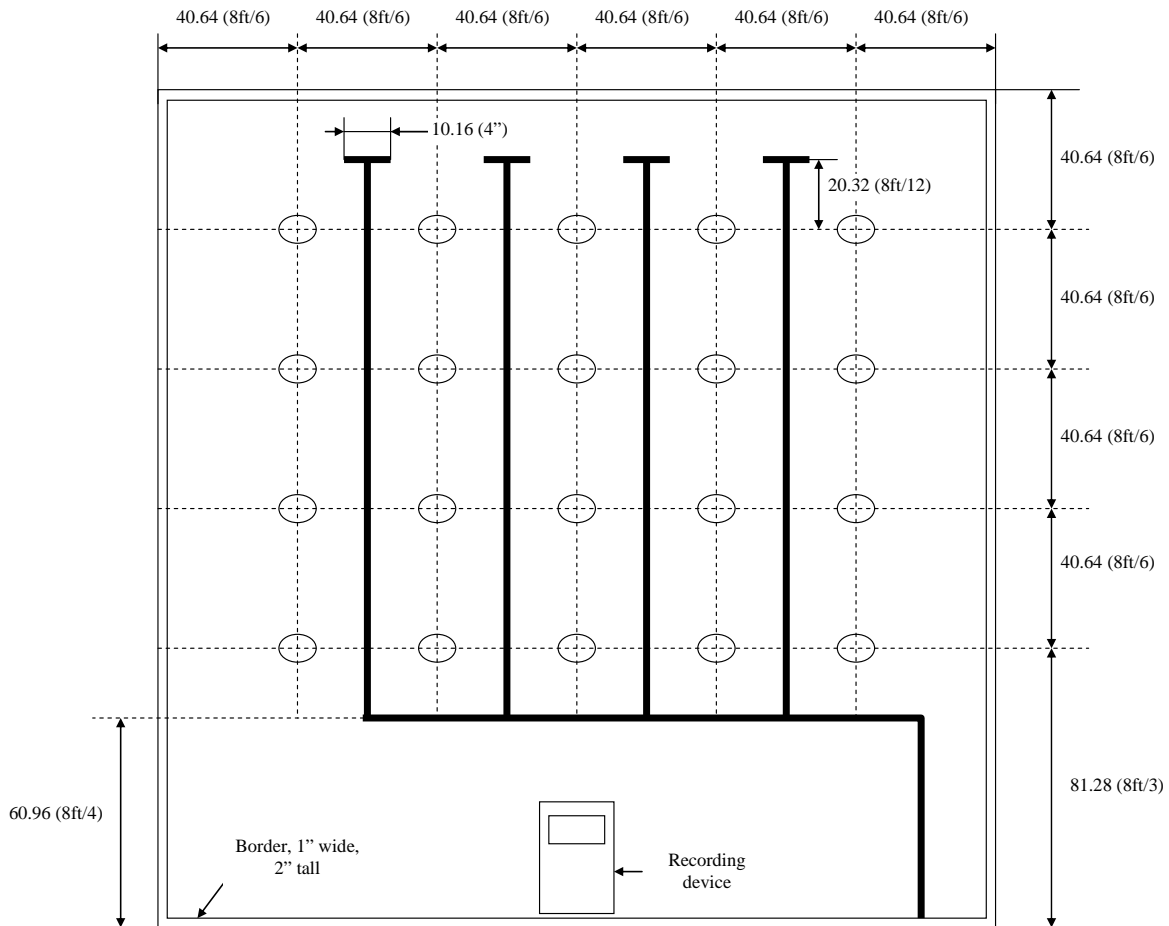
June 20-July 23, 2010  
Pittsburgh, Pennsylvania



The ASABE Robotics Competition is a student design competition that was conceived in 2006. The aim of the competition is to encourage undergraduate as well as graduate students to develop innovative robotic solutions to real life problems in the Agricultural arena. The competition is open to students in one or more departments from a single University. There is no maximum number of team members per team, and multiple teams from a University are allowed. There are no classes or leagues, every team will work on the same Challenge. There are no limits to the budget. Teams are encouraged to obtain external funding for their solutions and participation. Every team must have a faculty advisor which is also the liaison to ASABE and the organizers. The solutions will be demonstrated at the Annual International Meeting to be held on June 20-June 23, 2010, Pittsburgh, Pennsylvania. The solutions will be judged by a team of renowned people from Industry as well as Academia. The website of the ASABE Robotics Competition can be found [here](#).



**The Challenge:**



The Challenge for 2010 builds on the 2009 Challenge, where robotic vehicles navigated an artificial forest and detected the presence of trees. This year the Challenge is somewhat more complicated: All 20 trees will be placed in the forest and their heights must be measured along with their location on the board. The height of the trees varies from 50mm to 250mm with increments of 10mm. As in 2009, the robot size is limited to 40\*40\*40 cm. The location/height combinations must be wireless



transmitted to an off-line recording/display device. A complete description of the Challenge for 2010 with rules and judging criteria can be found [here](#). A [Q&A web page](#) is maintained where questions from teams and answers can be found.

**If you have a team and would like to participate in the 2010 ASABE Robotics Competition, please submit the form on the last page through scan/email, fax or mail to [Dr. Tony Grift](#).**

With kind regards,

Tony E. Grift, PhD  
Past Chair ASABE Robotics Student Design Competition Committee P127.

**RETURN EMAIL / FAX:**

ATTN: Tony Grift, PhD

Department of Agricultural & Biological Engineering  
1304 West Pennsylvania Ave  
Urbana IL 61801  
USA

FAX : **1 217 244 0323**  
Email : **grift@illinois.edu**

YES, we will participate in the 4<sup>th</sup> ASABE Robotics Competition, 2010.

Team Name :

Advisor Name :

Nr of students :

School :

Department :

Address :

Country :

Tel :

FAX :

E-mail :