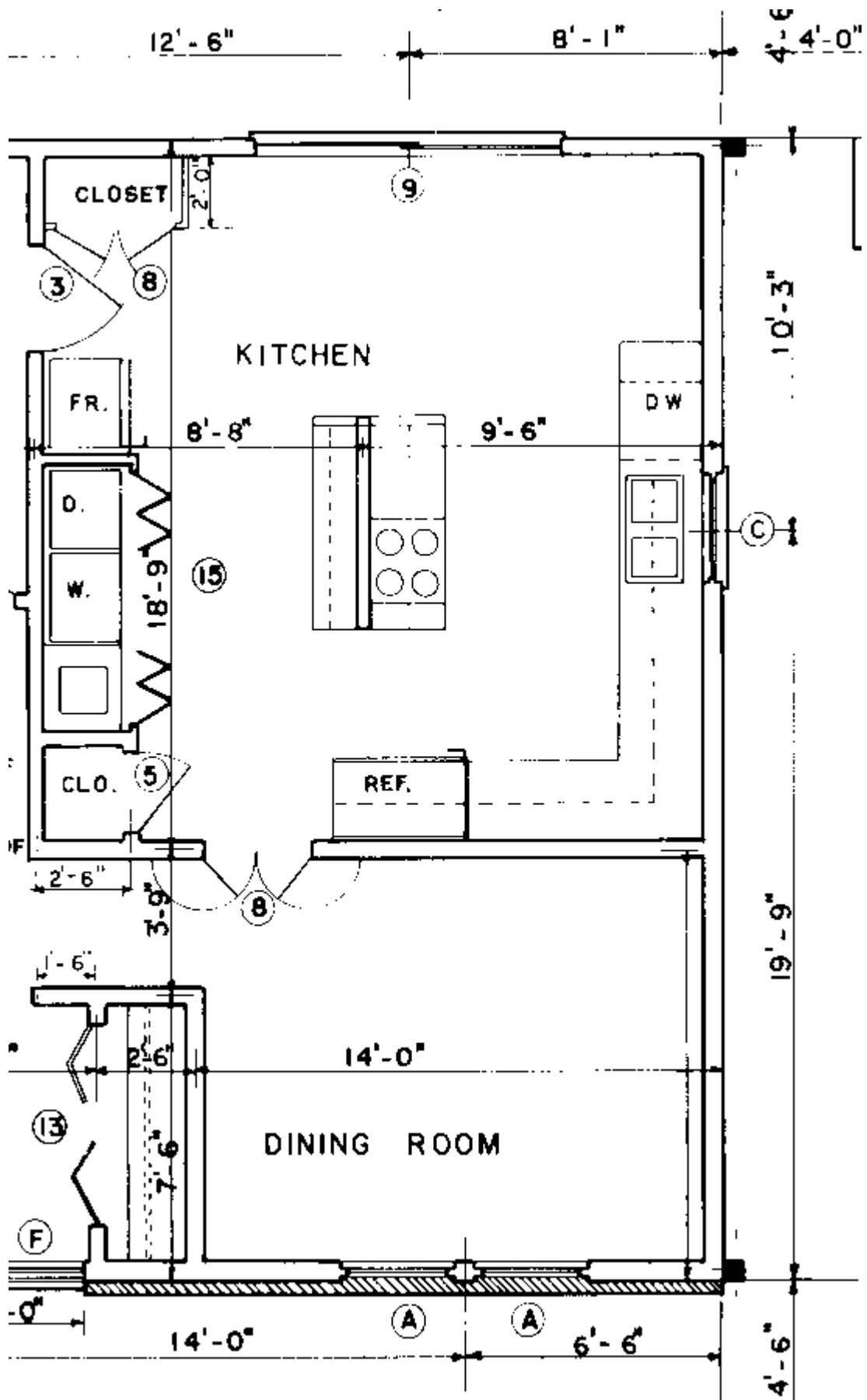


Homework Assignment #6

The following penalties will be levied for late submissions: - 10 points for the first day and -5 point for each additional day of lateness up to the return date.

- 1) **(10 pts)** Give 5 examples of what materials can be used to construct a residential house. Explain what is unique about each example. Also, detail a positive and negative aspect of each.
- 2) **(10 pts)** What are the different types of insulation? What is an advantage of each and where can each be used on a house?
- 3) **(6 pts)** What are the 3 concepts you should consider for your storage? How can each concept assist a person in storing items?
- 4) **(12 pts)** What type of storage device can be used to store the following items? Explain where in the house it should be stored?

Pots	Christmas lights
Board games	Linens or towels
Quilts	Books
Medicine	Passport
Gun ammunition	Snowboard
dry foods	Coats
- 5) **(12 pts)** Design a closet for 2 people. Explain how much space is needed for each person. Show overall dimensions and what type of door will be used. Assume that each person needs the same frontage space for hanging clothes as for shelves in the closet. Draw a scaled plan view of the closet.



6)

