

## Room Planning - Kitchen and Social Areas

---

---

---

---

---

---

---

---

- ### Three Areas of a House
- Work
    - Rooms or areas in the house used for labor or other work related activities
  - Social
    - Room or areas used to entertain guests, relax, socialize or eat
  - Private
    - Rooms or areas used for rest, dressing, hygienic needs and privacy

---

---

---

---

---

---

---

---



---

---

---

---

---

---

---

---




---

---

---

---

---

---

---

---

- Social Rooms**
- Living room
  - Family area
  - Great area
  - Rec room
  - Media room
  - Dining room
  - Den
  - patio

---

---

---

---

---

---

---

---

- What can Social Rooms be used?**
- Conversation Area
  - TV/media
  - Dining
  - Entertainment
  - Outside living area
  - Playing/recreational
  - Other (hobbies)

---

---

---

---

---

---

---

---

## Social Rooms

- Usually open area for appearance of more room
- Some social rooms can be combined with other rooms
  - Kitchen-dining room
  - Kitchen-family room
  - Workshop – garage
  - TV/media room – playing area
  - Entertainment – dining area

---

---

---

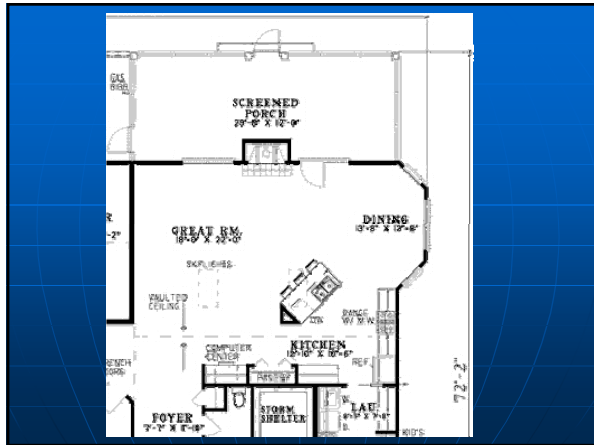
---

---

---

---

---



---

---

---

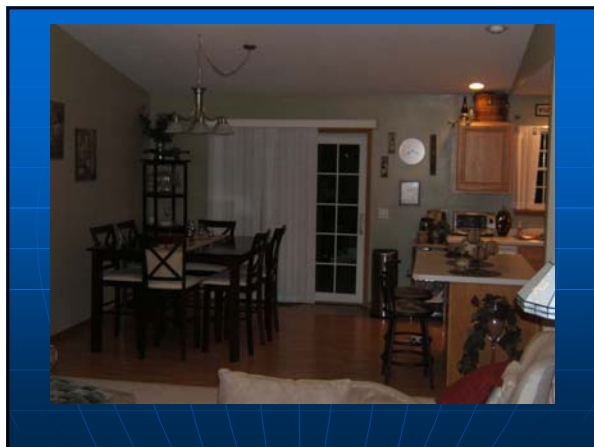
---

---

---

---

---



---

---

---

---

---

---

---

---

## Social areas – people flow

- Social area should be central area of house
- Everybody should go through it **but**;
- Flow should not inhibit purpose of room
  - Walking in front of TV
  - In between chairs of conversation area

---

---

---

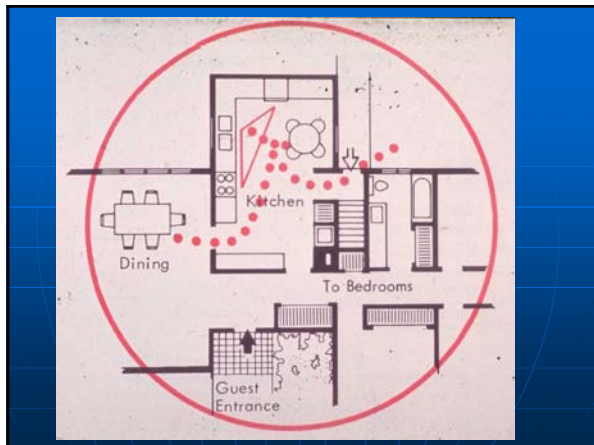
---

---

---

---

---



---

---

---

---

---

---

---

---



---

---

---

---

---

---

---

---

### Conversation area

- Area = 10' diameter
- Parties = 6' diameter
- Width no more than 12' – 14' wide

---

---

---

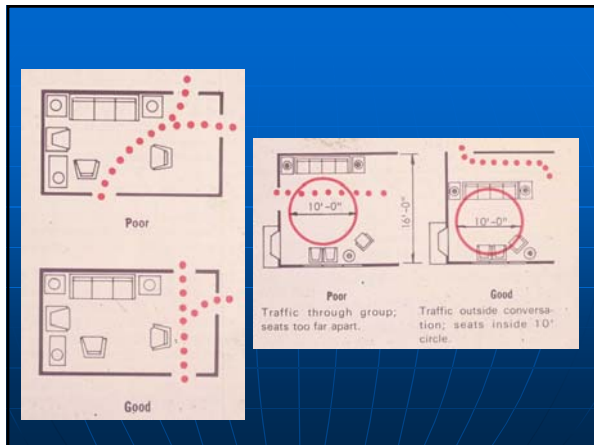
---

---

---

---

---



---

---

---

---

---

---

---

---

### Family area

- More active area
  - Used for play
  - Watch TV
- More spacious since more movement
- No smaller than 12' by 16'.

---

---

---

---

---

---

---

---

## Great Room

- Multipurpose room
- Usually a combination room
- Especially good for entertaining bigger groups in smaller houses
- Good for watching kids while working in another room.
- Disadvantage – could become too noisy with bigger groups/families

---

---

---

---

---

---

---

---

## Hobby Room

- Area of concentration – need to focus on job at hand.
- Traffic lanes should not go through this area.
- Room should have walls to buffer sounds
- Should be hidden from guests. Why?

---

---

---

---

---

---

---

---

## Dining Area

- Located between kitchen and social area
- Dining counters popular right now
  - Quick
  - Convenient eating
- Spacing for leg room and plate is dependant on counter height

---

---

---

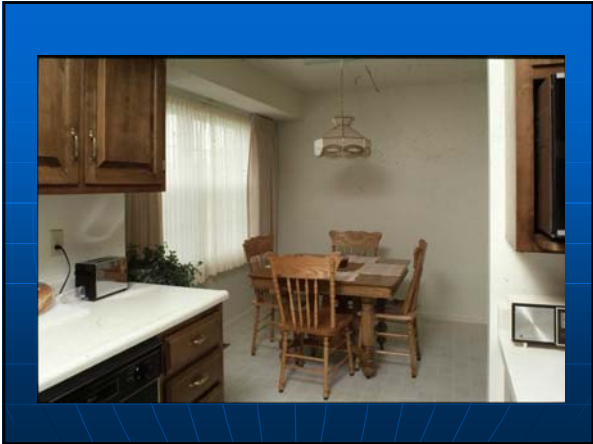
---

---

---

---

---



---

---

---

---

---

---

---

---

### Dining Room

- Used for more sit down, social meal
- Can be combined with other social rooms
- Should have adequate area for people movement around table, hutches and other cabinets
- Table size dependent # people
  - 24" width/person

---

---

---

---

---

---

---

---

### Kitchens

---

---

---

---

---

---

---

---

# Kitchen Types

- Island
- U shape
- L shape
- Peninsula
- Corridor
- Straight Line

---

---

---

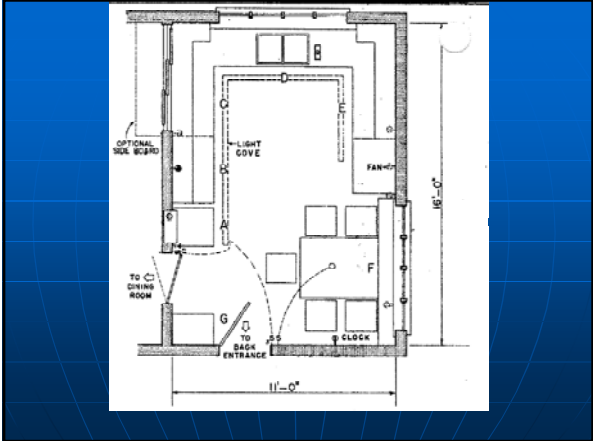
---

---

---

---

---



---

---

---

---

---

---

---

---



---

---

---

---

---

---

---

---





---

---

---

---

---

---

---

---

### Kitchens

- Should be able to cook and socialize
- View to backyard preferred
- Location to exterior door. Why?
- Plenty of window area.
  - Cooling
  - Light
- Additional lighting under cabinets

---

---

---

---

---

---

---

---

### Kitchens – Design Dimensions

- Work Triangle
  - Between sink, cooking surface & refrigerator
  - 26' of walking distance between surfaces

---

---

---

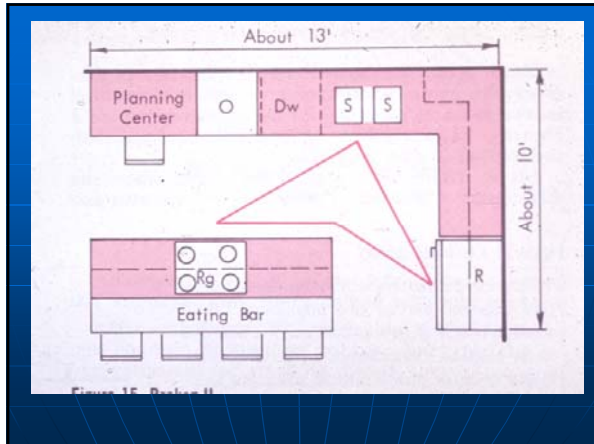
---

---

---

---

---



---

---

---

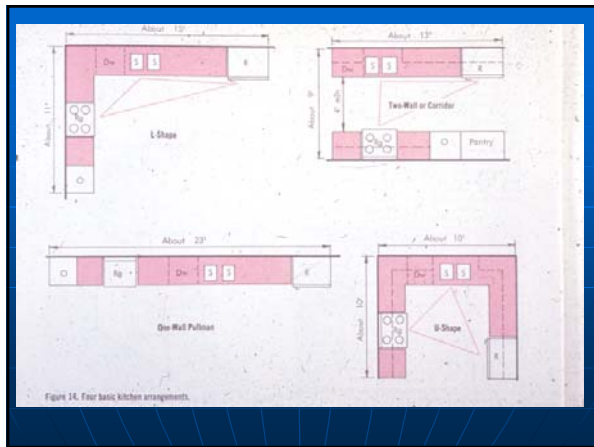
---

---

---

---

---



---

---

---

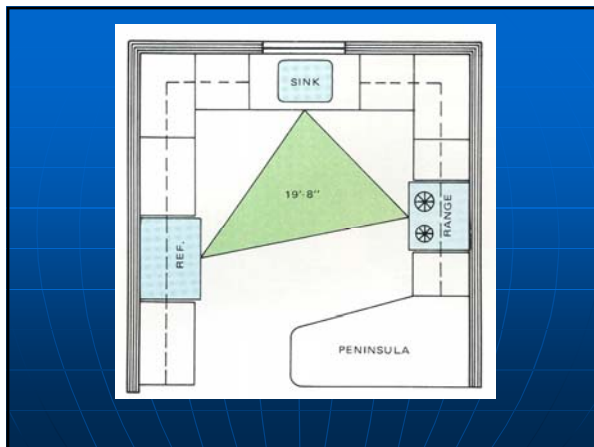
---

---

---

---

---



---

---

---

---

---

---

---

---

## Kitchens – Design Dimensions

- Counter Space
  - 158" of counter frontage
  - 24" minimum depth
  - Landing spaces needed
- Wall cabinets at least 15" above counters

---

---

---

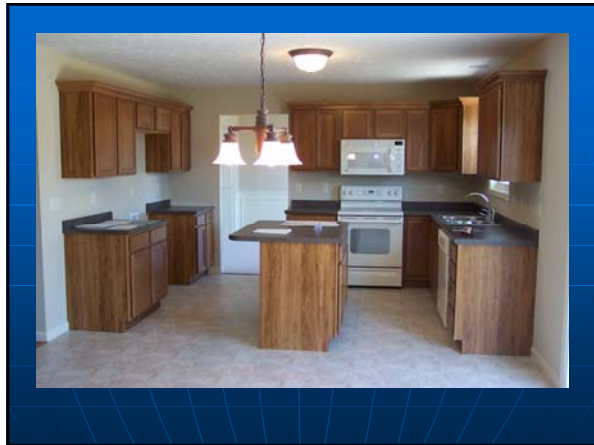
---

---

---

---

---



---

---

---

---

---

---

---

---

## Kitchens – Design Dimensions

- Preparation Center
  - 36" continuous counter area/person
  - 60" continuous counter area/2 people
- Sink Center
  - 24" & 18" on each side of sink
  - Secondary sink needs 18" & 3" on each side

---

---

---

---

---

---

---

---



---

---

---

---

---

---

---

---

## Kitchens – Design Dimensions

### ■ Appliances

- Dishwasher – 21" of floor space in front of it to open
- Oven/stove/range
  - Vent exhaust hood to outside preferred over recirculating
  - Stove – 15" & 12" of counter space on each side
    - Clearance - 24" clearance from non combustible surface & 30" from combustible surface

---

---

---

---

---

---

---

---

## Kitchens – Design Dimensions

### ■ Appliances

- Ovens – 15" counter space no more than 48" from oven
- Microwave – 15" counter space around appliance
  - Height can vary from 15" to 54"
- Refrigerator – 15" of counter space on handle side or either side on side by side freezer/refrigerator

---

---

---

---

---

---

---

---




---

---

---

---

---

---

---

---

---

---

---

---

REFRIGERATION			
CU #1	WIDTH	HEIGHT	DEPTH
6	24"	66"	24"
12	36"	66"	24"
18	36"	66"	24"
24	36"	66"	24"
30	36"	66"	24"
36	36"	66"	24"
42	36"	66"	24"
48	36"	66"	24"
54	36"	66"	24"
60	36"	66"	24"
66	36"	66"	24"
72	36"	66"	24"
78	36"	66"	24"
84	36"	66"	24"
90	36"	66"	24"
96	36"	66"	24"
102	36"	66"	24"
108	36"	66"	24"
114	36"	66"	24"
120	36"	66"	24"
126	36"	66"	24"
132	36"	66"	24"
138	36"	66"	24"
144	36"	66"	24"
150	36"	66"	24"
156	36"	66"	24"
162	36"	66"	24"
168	36"	66"	24"
174	36"	66"	24"
180	36"	66"	24"
186	36"	66"	24"
192	36"	66"	24"
198	36"	66"	24"
204	36"	66"	24"
210	36"	66"	24"
216	36"	66"	24"
222	36"	66"	24"
228	36"	66"	24"
234	36"	66"	24"
240	36"	66"	24"
246	36"	66"	24"
252	36"	66"	24"
258	36"	66"	24"
264	36"	66"	24"
270	36"	66"	24"
276	36"	66"	24"
282	36"	66"	24"
288	36"	66"	24"
294	36"	66"	24"
300	36"	66"	24"
306	36"	66"	24"
312	36"	66"	24"
318	36"	66"	24"
324	36"	66"	24"
330	36"	66"	24"
336	36"	66"	24"
342	36"	66"	24"
348	36"	66"	24"
354	36"	66"	24"
360	36"	66"	24"
366	36"	66"	24"
372	36"	66"	24"
378	36"	66"	24"
384	36"	66"	24"
390	36"	66"	24"
396	36"	66"	24"
402	36"	66"	24"
408	36"	66"	24"
414	36"	66"	24"
420	36"	66"	24"
426	36"	66"	24"
432	36"	66"	24"
438	36"	66"	24"
444	36"	66"	24"
450	36"	66"	24"
456	36"	66"	24"
462	36"	66"	24"
468	36"	66"	24"
474	36"	66"	24"
480	36"	66"	24"
486	36"	66"	24"
492	36"	66"	24"
498	36"	66"	24"
504	36"	66"	24"
510	36"	66"	24"
516	36"	66"	24"
522	36"	66"	24"
528	36"	66"	24"
534	36"	66"	24"
540	36"	66"	24"
546	36"	66"	24"
552	36"	66"	24"
558	36"	66"	24"
564	36"	66"	24"
570	36"	66"	24"
576	36"	66"	24"
582	36"	66"	24"
588	36"	66"	24"
594	36"	66"	24"
600	36"	66"	24"
606	36"	66"	24"
612	36"	66"	24"
618	36"	66"	24"
624	36"	66"	24"
630	36"	66"	24"
636	36"	66"	24"
642	36"	66"	24"
648	36"	66"	24"
654	36"	66"	24"
660	36"	66"	24"
666	36"	66"	24"
672	36"	66"	24"
678	36"	66"	24"
684	36"	66"	24"
690	36"	66"	24"
696	36"	66"	24"
702	36"	66"	24"
708	36"	66"	24"
714	36"	66"	24"
720	36"	66"	24"
726	36"	66"	24"
732	36"	66"	24"
738	36"	66"	24"
744	36"	66"	24"
750	36"	66"	24"
756	36"	66"	24"
762	36"	66"	24"
768	36"	66"	24"
774	36"	66"	24"
780	36"	66"	24"
786	36"	66"	24"
792	36"	66"	24"
798	36"	66"	24"
804	36"	66"	24"
810	36"	66"	24"
816	36"	66"	24"
822	36"	66"	24"
828	36"	66"	24"
834	36"	66"	24"
840	36"	66"	24"
846	36"	66"	24"
852	36"	66"	24"
858	36"	66"	24"
864	36"	66"	24"
870	36"	66"	24"
876	36"	66"	24"
882	36"	66"	24"
888	36"	66"	24"
894	36"	66"	24"
900	36"	66"	24"
906	36"	66"	24"
912	36"	66"	24"
918	36"	66"	24"
924	36"	66"	24"
930	36"	66"	24"
936	36"	66"	24"
942	36"	66"	24"
948	36"	66"	24"
954	36"	66"	24"
960	36"	66"	24"
966	36"	66"	24"
972	36"	66"	24"
978	36"	66"	24"
984	36"	66"	24"
990	36"	66"	24"
996	36"	66"	24"
1002	36"	66"	24"

---

---

---

---

---

---

---

---

---

---

---

---

## Kitchens – Design Dimensions

- Storage Spaces
  - Between 1400" & 2000" of frontage
  - $TF = CW * CD * SD$

12

TF = total frontage, in  
 CW = cabinet width, in  
 CD = cabinet depth, in  
 SD = number of shelves and drawers

---

---

---

---

---

---

---

---

---

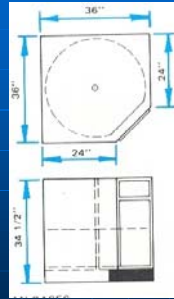
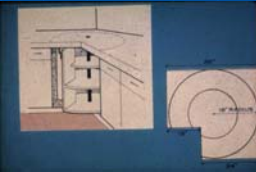
---

---

---

## Cabinet Design Example

- What is the total frontage for the lazy susan shown.




---

---

---

---

---

---

---

---

## Cabinet Design Example

- $$TF = \frac{CW * CD * SD}{12}$$

$$CW = 36 \text{ in}$$

$$CD = 24 \text{ in}$$

$$SD = 2$$

$$TF = \frac{36 * 24 * 2}{12}$$

$$TF = 144 \text{ in}$$

---

---

---

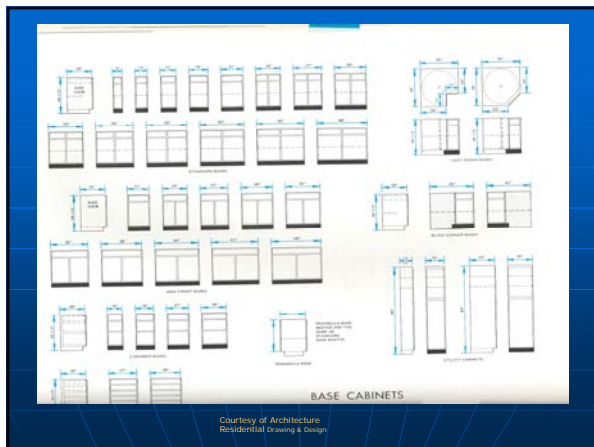
---

---

---

---

---




---

---

---

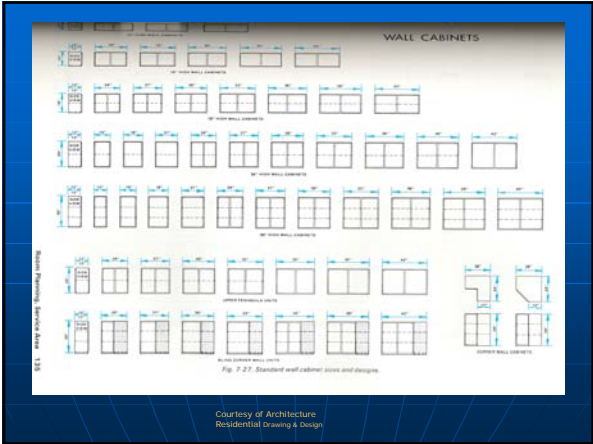
---

---

---

---

---




---

---

---

---

---

---

---

---




---

---

---

---

---

---

---

---




---

---

---

---

---

---

---

---